



Reports to the
BOARD OF REGENTS
Student Success is our focus!

May 3, 2016, Meeting

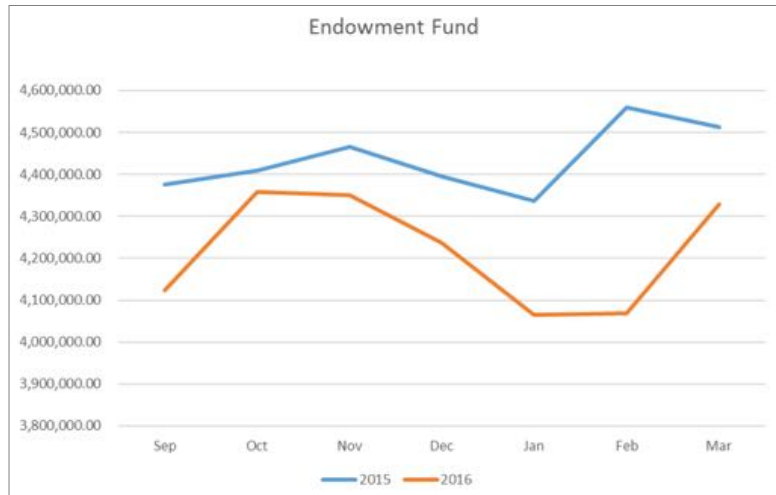
Tofol, Kosrae, FM

ADMINISTRATIVE SERVICES

VP Joseph Habuchmai

The market value of endowment fund has increased by \$206K unrealized gain or 5%, from \$4.122 million as of September 30, 2015, to \$4.329 million as of March 31, 2016

The 2016 market growth is lower compared to 2015 although month of March shows remarkable increase.



College implements inter-campus shuttle services fee in spring 2016

The inter-campus shuttle service fee was implemented this spring 2016 at \$40.00 per semester for those students who opt to use the college's shuttle service. 350 students chose to purchasing bus passes generating \$14,000.00 for spring 2016 semester. The college anticipates that the number of students who select to use the shuttle service will decrease by about 250 during the summer; however, an increase to about 450 students in fall 2016.

\$118,774.11 allocated for state campus major repairs

The National Campus' maintenance office has allocated its resources under building maintenance budget to support needs for state campus repairs. The amount of \$56,864.99 was used for Chuuk Campus repairs, and \$61,909.12 for Pohnpei Campus repairs.

Refrigerated drinking fountains installed at the National Campus

Four refrigerated drinking fountains were installed at the National Campus located at the classrooms, library, administration building, and at the FSM-China Friendship Sports Center. Public water supply in Palikir is potable enabling refrigerated drinking fountains.

At this rate, it is possible for the college to generate \$35,000.00 per annum which is sufficient to cover the cost of operation of the buses that includes, bus drivers' salaries, fuel, maintenance and replacement of buses every three to five years.

Procurement policies and guidelines

To help in the implementation of the centralized procurement system of the college, the college's director of procurement has also begun working on drafting policies and guidelines, such as: (a) guidelines for price quoting, (b) conflict of interest policy, and (c) revision of the policy on disposal of fixed assets. These draft policies and guidelines will be submitted for further review and approval.

College of Micronesia-FSM

Preliminary Statement of Revenues, Expenses and Changes in Net Position

September 30, 2015 and 2014

| | 2015 | 2014 |
|---|---------------|---------------|
| Operating revenues: | | |
| Students tuition and fees | \$ 8,528,524 | \$ 7,953,868 |
| Less: Scholarship discount and Allowances | (7,249,700) | (7,117,413) |
| Federal grants and contracts | 1,278,824 | 836,455 |
| Government grants and contracts | 15,709,445 | 15,425,720 |
| Sales and services of auxiliary enterprises | 1,427,227 | 2,784,800 |
| Other revenue | 1,471,736 | 1,761,930 |
| | 177,641 | 223,902 |
| Total operating revenues | 20,064,873 | 21,032,807 |
| Less bad debts | (333,284) | (358,417) |
| Net operating revenues | 19,731,589 | 20,674,390 |
| Operating expense: | | |
| Institutional support | 3,218,360 | 3,349,599 |
| Instruction | 6,910,477 | 7,530,851 |
| Student financial assistance | 2,742,160 | 3,414,711 |
| Student services | 1,173,796 | 1,308,537 |
| Depreciation | 765,162 | 866,792 |
| Auxiliary enterprises | 1,296,229 | 1,711,351 |
| Academic support | 724,759 | 730,084 |
| Operating and maintenance plant | 1,492,686 | 1,632,431 |
| Total operating expenses | 18,323,629 | 20,544,356 |
| Operating earnings (loss) | 1,407,960 | 130,034 |
| Non-operating revenues (expense): | | |
| Contribution to the foundation | | (625,000) |
| Net investment income (loss) | (366,380) | 351,100 |
| Total non-operating expense (revenues) | (366,380) | (273,900) |
| Change in Net Position | \$ 1,041,580 | \$ (143,866) |
| Net Position | | |
| Beginning of the Year | \$ 22,937,979 | \$ 23,081,845 |
| End of the Year | \$ 23,979,559 | \$ 22,937,979 |

Continued to page 2



Purchase orders and other procurement procedures using Abila MIP System

Robert Santos, director of procurement, has begun working on setting up the college's Abila MIP system to handle purchase orders and other procurement procedures. Customized forms (purchase order and receiving report forms) that will be used in the implementation of the centralized procurement system in the college were created in the MIP system. According to the director of procurement, "The new set-up will do away with the manual numbering of purchase orders and receiving reports." He further added that this will also make things easy on the part of the accounts payable and the accountants because they do not have to manually enter the encumbrances into the system. Under this new set-up, encumbrances are automatically

created once purchase orders are processed.

After a pilot-test of the MIP procurement module, both purchase order and receiving report processing has been set-up and are now ready for use in the implementation of the centralized procurement system of the college. A brief demo on the use of the MIP procurement module for business office accountants and the in-charge for accounts payable was also conducted. This is to ensure that they are familiar with the changes in the MIP system as the college starts to use MIP procurement module for centralized purchase order and receiving report processing.

Continued to page 2

The College of Micronesia-FSM will support and strengthen faculty, staff, and administrators through establishment of aspirational goals for credentialing and funding professional development and building upon organizational and leadership capacity.



College plans to use new asset tags

Contract The college's Procurement Office has requested samples of aluminum foil asset tags with barcodes that is being recommended to replace the thick aluminum tags currently being used.

The old asset tags are too thick and non-flexible thus are not suitable for office equipment such as laptop computers and other electronic equipment. The adhesive of these old asset tags are not of good quality so they are easily detached from the equipment.

On the other hand, the new asset tags are flexible, made out of heavy duty thin aluminum foil with good quality adhesive, and are weather resistant. Additionally, they have barcodes that can be simply scanned when performing regular inventory of assets; as such, making the inventory of assets easier.



disposing the unexploded ordnance.

Meanwhile, the college's maintenance office has placed order for metal detectors to be used to sweep the campus for possible ordnance, and for checking ammunitions in areas before any excavation work is performed.

FSM-China Friendship Sports Center to undergo floor repair

Contract for the replacement of the FSM-China Friendship Sports Center's practice court wooden floor has been executed with A&P Construction in the amount of \$100,000.00. The hardwood specified for the floor will be manufactured in China according to the contractor.

The project is scheduled to be completed by August 2016. Removal of the floor will begin in June or sooner depending on shipping of the floor materials.

Unexploded ordnance found at Pohnpei Campus

After several unexploded mortar shells were found at Pohnpei Campus, efforts were taken to secure the site where the shells were found. The college's maintenance staff proceeded to also locate a metal detector from local contractors and found more shells.

While Pohnpei State Department of Public Safety secured the unexploded ordnance, The director of maintenance, chief of security, and Pohnpei Campus director met with acting director of public safety to authorize the college to proceed and clear the bushes around the bunker area, secure the bomb shelter with tin roofing, and install a security light to be more visible at night. Communications have been made from the college to FSM National Government and Pohnpei State to assist in

Purchase orders continued from page 1.

The director of procurement further reported that a system has been created (Purchase Order log) in order to easily track the status of all purchase orders. This new system will also help both the procurement and business offices in monitoring status of all procurement transactions.

Preliminary Statement of Revenues, Expenses and Changes in Net Position September 30, 2015 and 2014

| ASSETS | 2015 | 2014 |
|---|----------------------|----------------------|
| Current assets: | | |
| Cash and cash equivalents | \$ 7,227,101 | \$ 5,538,735 |
| Tuition receivable, net | 1,262,424 | 1,370,034 |
| Grants and contracts receivable, net | 4,903,683 | 4,081,671 |
| Other receivable, net | 363,749 | 1,116,286 |
| Inventory | 171,897 | 189,668 |
| Prepaid expenses | 1,329,985 | 1,436,842 |
| | 1,263,216 | 904,796 |
| Total current assets | 16,522,055 | 14,638,032 |
| Noncurrent assets: | | |
| Investments | | |
| Capital assets: | 4,122,830 | 4,375,829 |
| Non-depreciable capital assets | | |
| Capital assets, net of accumulated depreciation | 1,455,685 | 1,455,685 |
| | 6,850,481 | 7,431,652 |
| Total noncurrent assets | 12,428,996 | 13,263,166 |
| Total assets | \$ 28,951,052 | \$ 27,901,198 |
| LIABILITIES AND NET ASSETS | | |
| Current liabilities: | | |
| Accounts payable | \$ 169,817 | \$ 740,300 |
| Accrued liabilities | 624,923 | 211,553 |
| Accrued annual leave | 296,198 | 298,614 |
| Deferred revenue | 2,952,126 | 2,881,149 |
| Other current liabilities | 594,835 | 495,289 |
| Total current liabilities | 4,637,899 | 4,626,904 |
| Non-current liabilities: | | |
| Long-term portion of accrued annual leave | 333,594 | 336,315 |
| Total liabilities | 4,971,493 | 4,963,219 |
| Commitments and Contingencies | | |
| Net assets: | | |
| Invested in capital assets | 8,306,166 | 8,887,337 |
| Restricted: | | |
| Nonexpendable | 4,122,830 | 4,375,829 |
| Unrestricted | 11,550,563 | 9,674,813 |
| Total net assets | \$ 23,979,559 | \$ 22,937,979 |
| Total liabilities and net assets | \$ 28,951,052 | \$ 27,901,198 |

2016 Revenue and Expenditures

As of March 31, 2016

| | | |
|--|--------------|--|
| Restricted Results of Operations | | |
| Revenue | | |
| Tuition and Fees | \$ 7,720,749 | |
| FSM General Fund | 2,800,000 | |
| ESG | 1,000,000 | |
| Auxiliary Services | 50,000 | |
| Recovery from IC | 100,000 | |
| | 11,670,749 | |
| Expenditures | | |
| Actual Expenditures as of March 31, 2016 | (5,374,685) | |
| | 6,296,065 | |
| Positive Balance of 2015 Budget | | |
| Depreciation | (745,998) | |
| Allowance for Doubtful Accounts | (400,000) | |
| | 5,150,067 | |
| Change in Net Position | | |
| | \$ 5,150,067 | |



Human Resources Office: 364 Filled full-time positions as of March 23, 2016

Of the 364 full-time employees, 285 (77%) are FSM citizens while 82 (23%), non-FSM citizens. Additionally, of the 82 full-time non-FSM citizen employees, 50 (61%) are instructors, nine (11%) are key administrators, and 23 (28%) are in the specialized areas such as accountants, librarians, researchers, and professional staff.

| Campus | Management | | Instructor | | Researcher | | Professional | | Classified | | Total n |
|--------------|------------|-----------|------------|------------|------------|-----------|--------------|------------|------------|------------|------------|
| | Count | In % of n | Count | In % of n | Count | In % of n | Count | In % of n | Count | In % of n | |
| National | 15 | 9% | 45 | 28% | 0 | 0% | 40 | 25% | 60 | 38% | 160 |
| Pohnpei | 7 | 9% | 22 | 28% | 1 | 1% | 21 | 27% | 28 | 35% | 79 |
| Chuuk | 1 | 3% | 12 | 32% | 1 | 3% | 12 | 32% | 11 | 30% | 37 |
| Kosrae | 3 | 9% | 8 | 24% | 1 | 3% | 9 | 26% | 13 | 38% | 34 |
| Yap | 5 | 14% | 7 | 20% | 1 | 3% | 12 | 34% | 10 | 29% | 35 |
| FSM FMI | 1 | 5% | 5 | 26% | 0 | 0% | 2 | 11% | 11 | 58% | 19 |
| TOTAL | 32 | 9% | 99 | 27% | 4 | 1% | 96 | 26% | 133 | 37% | 364 |

The College of Micronesia-FSM will pursue excellence in student success and will develop a balance between "access and success" with appropriate career pathways for learners.

Review process for performance evaluation of personnel

The number and percentage of evaluations completed prior to due date is on steady increase from 11% in 2014, to 42% in 2015; while 100% is achieved in 2016, as of March 4, 2016. All 72

performance evaluations due by the deadline as stipulated in the president's March 10, 2016, memorandum were completed as shown in the second table below.

| 2015 | | | | | | |
|-------------------------------------|--------------------------------|-----------------------------|------------------------------|-------------------------------------|--|--|
| 1 day to 8 months prior to due date | on due date | 1 to 29 days after due date | 2 to 3 months after due date | After 4 to 11 months after due date | 1 year after due date | Number of personnel whose evaluations were due |
| 97 (42%) | 7 (2%) | 52 (15%) | 49 (14%) | 72 (21%) | 21 (6%) | 339 |
| 2016 | | | | | | |
| 1 month prior to due date | 1 to 24 days prior to due date | On the due date | 1 to 21 days after due date | 1 month after the due date | Number of personnel whose evaluations were due | |
| 3 | 13 | 3 | 42 | 11 | 72 | |

Update on No. 19 actionable improvement plan for ACJCC Standard III.A.5

Board Policy No. 6017 is being amended to provide the college and its supervisors a realistic timeline to follow and to make evaluations meaningful and

manageable. The amended policy will be sent to Human Resources Committee for review and input.

Update on hiring

15 positions were filled: one faculty, one management, 13 professional and support staff at Yap, Pohnpei, Chuuk, and National Campuses.



VPIA: Additional section to both Appendix E and Appendix F proposed

Karen Simion, vice president for instructional affairs, has proposed an additional section to both Appendix E-Performance Evaluation for support staff, and Appendix F-Employee Progress Report for administrators to include a section that addresses the use of learning outcomes to improve teaching and learning.

considered "procedures" and will be approved by Cabinet/Executive Committee once finalized this April.

On April 22, 2016, 48 supervisors from both National and Pohnpei Campuses are taking part in workshop designed to help them conduct employee performance evaluation better to meet the accreditation's standard, and comply with Board Policy No. 6017 (Performance Evaluation).

The amendments are being reviewed by the Human Resources Committee and the Management Team. They are

The College of Micronesia-FSM will be viewed as a model institution for best practices exhibited through quality, excellence, and integrity of both employees and graduates. The college will maintain regional accreditation without sanction for the maximum six-year cycle allowed by the Accrediting Commission for Community and Junior Colleges: Western Association of Schools and Colleges.

COM-FSM begins Gateways to Completion (G2C) Project



Success in foundation level courses is a direct predictor of retention. Gateways to Completion (G2C) will provide the college with processes, guidance and tools to support redesign of lower division and/or developmental level courses.

VPIA Karen Simion, Instructional Coordinator, Yap, Denise Oen, and math instructor Yen-ti Verg-in attended the John N. Gardner Institute Gateways to Completion workshops and annual conference April 1 – 6, 2016. The project focus is to use predictive analytics to redesign identified gateway courses for increased student engagement and early interventions so students are successful in these courses the first time. This project coincides with the identified FY 2017 budget priority focus on math and writing.

▶ INSTRUCTIONAL AFFAIRS

VP Karen Simion

VPIA: Program improvement highlights



1. The Agriculture and Food Technology program at Pohnpei Campus introduced hydroponics for the first time as a new technique for growing vegetables.
2. The Social Science Club and Phi Theta Kappa students travel to the Pohnpei Public Library each week to read Micronesian legends and myths to young people. This program promotes civic responsibility for COM-FSM students and at the same time promotes the tradition of story telling.
3. Hospitality and Tourism Management faculty now have student interns act as supervisors for the Blue Plate Café. Previous intern experiences did not typically include supervisory experience.
4. The Education division has engaged in a yearlong collegial dialogue to realign the curriculum from the Third Year Certificate in Teacher Preparation down to the associate degree in Pre-Teacher Preparation. The last practicum course will become the capstone course and all other courses in the programs will provide learning opportunities for students to be successful in the capstone course.
5. Third Year General Business students held the first New Products Exhibits. Students were required to conceptualize new products and develop marketing plans. The products were sold at the Exhibit. During the exhibit, several storeowners approached students asking them to supply their products. The event is used to assess student learning in Entrepreneurial/ Small Business Management and Marketing Strategies classes.
6. Bertoldo Esteban, Refrigeration and Air Conditioning instructor attended a train the trainer workshop in China on the how to handle the new refrigerant used in air conditioners. The new refrigerant does less harm to the ozone layer, but is flammable. Mr. Esteban will conduct a training session for technicians in June in FSM and adjust RAC courses so students graduate with the proper skills.
7. All Career and Technical Education programs have re-established advisory councils. Several program specific councils were established rather than one large umbrella council to serve specific program needs and interests.



Doctors and Dentist for Tomorrow

Doctors and Dentists for Tomorrow is a collaborative effort between COM-FSM and the Pacific Island Health Officers' Association to prepare the best and brightest students from across the Federated States of Micronesia to become the physicians and dentists of tomorrow. Recruitment is currently underway across all high schools in the FSM, with the full support of both the national and state governments.

A committee appointed by each state government will screen identified candidates. Ultimately, six candidates from each state, for a total of



24 candidates, will be chosen to enter the Doctors and Dentists for Tomorrow program. Doctors and Dentists for Tomorrow is an intensive 24-month course of study specifically geared towards what students need to succeed in the first year of medical and dental school. It will include science, math, communications, as well as academic study skills for success.

FSM-FMI Enrollment

FSM Fisheries and Maritime Institute (FSM FMI) has 47 cadets enrolled this academic year.

Annual Vocational Education Exhibit

Pohnpei, Kosrae and Yap campuses will hold the annual Vocational Education Exhibit on April 28 and 29. The local community and high schools are invited to learn about programs on the respective campuses.



Number of sections offered this spring 2016, and number of full-time and part-time faculty by campus

| Campus | Number of Sections | | Full-Time Faculty | | Part-Time Faculty | | Total n |
|----------------|--------------------|-------------|-------------------|------------|-------------------|------------|------------|
| | Count | % of N | Full-Time | % of n | Part-Time | % of n | |
| National | 188 | 47% | 46 | 81% | 11 | 19% | 57 |
| Kosrae | 38 | 10% | 8 | 67% | 4 | 33% | 12 |
| Pohnpei | 85 | 21% | 21 | 78% | 6 | 22% | 27 |
| Chuuk | 51 | 13% | 12 | 75% | 4 | 25% | 16 |
| Yap | 36 | 9% | 6 | 40% | 9 | 60% | 15 |
| Total N | 398 | 100% | 93 | 73% | 34 | 27% | 127 |

College signed agreement with GCASAV

To provide a safe, health campus, facilitate effective response to students experiencing sexual assault, and support sexual assault policies and prevention initiatives, the college entered into a memorandum of agreement with the Guam Coalition Against Sexual Assault and Family Violence (GCASAFV) last March 28, 2016.

Established in 2006, GCASAFV is a non-profit organization whose members are other community-based providers, government allies, and individuals who address sexual assault and family violence issues on Guam and the region. The organization is

recognized as the territory's sexual assault coalition by the US Department of Justice, Office of Violence Against Women, and as the territory's domestic violence coalition by the US Department of Health and Human Services, Family Violence Prevention and Services Program.

Under this MOA, the college and GCASAFV will collaborate to submit a Pacific Partners (PPP) proposal in response to the announcement on availability of funds for the College Sexual Assault Policy and Prevention Initiative by the Office of the Assistant Secretary for Health (OASH)/Office of Women's Health (OWH).

▶ INSTITUTIONAL EFFECTIVES & QUALITY ASSURANCE

VP Frankie Harriss

Self-evaluation process update

COM-FSM underwent its ACCJC Visiting Team Evaluation 08-17 March 2016. The team offered positive comments about the quality of the report and evidence provided. The team exit report provided both seven commendations and seven recommendations/concerns.

The team chair noted the report was still in draft form (and thus changes were possible) and reminded the college that the team will make a confidential recommendation to the Commission. However the final decision on the college's status will be up to the Commission.

The college is awaiting the team report for purposes of fact checking only. Only the CEO and ALO will view the report as it must remain confidential until after the release and public announcement of the Commission's decision taken during the June 2016 meeting.

Commission results in the form of an *Action Letter* will be sent to the college during the first week of July. At that time, the *Visiting Team Evaluation Report* will be provided. The college is required to publish that report as well as the Commission *Action Letter* to the public.



Commission results in the form of an *Action Letter* will be sent to the college during the first week of July. At that time, the *Visiting Team Evaluation Report* will be provided. The college is required to publish that report as well as the Commission *Action Letter* to the public.

The college intends to submit a *Supplemental Report* (an optional report) to the Commission in mid-May and the president will appear before the Commission in June to present additional work completed and answer Commission questions. For support, the chairman of the BOR and the ALO will accompany the president.

Student and staff ID

An ID system is 100% deployed and fully in use. Bank of the FSM recognizes the ID's as official, whereas Bank of Guam will not. COM-FSM will ask National and State Governments for formal ID recognition.

Front View

- Student Last name is prominent on the ID card. First name is less prominent.
- Student date of birth (DOB) is printed in red.
- Expiration is exactly two years from date of issuance.
- Student signature

Back View

- Seven digit COM-FSM ID number.
- Bar code of COM-FSM ID number.
- Tamper Evident Sticker indicating enrollment into semester. Green (spring), Red (summer), Organe (fall)
- The statement of ownership appears on every card. The contact information will vary per campus.
- Ghost image of student image. The ghost image should match student picture on front of the card.
- Holographic images that appear on front of the card.

Tamper Evident Stickers

- Spring (Green)
- Summer (Red)
- Fall (Orange)

Technology Notes

Networks/Systems

All campuses continue internet services via ADSL, Single Mode Fiber optics, and/or T1 technologies. Kosrae Campus has the least bandwidth available consequent to limitations offered in Kosrae State. CRE financial grant assistance facilitates satellite uplinks via PACNET offering Kosrae Campus additional bandwidth, compensating network shortfalls from FSMTC in Kosrae. Preliminary discussions to expand Kosrae Campus bandwidth capacity through FSMTC have begun. Data indicate wireless internet usage is increasing at all campuses.

Computer Labs

Purchase of student support technology in computer labs, and in support of networks for those labs, continues on schedule. The National Campus business computer lab has new equipment in place. New student computer lab equipment purchases are scheduled for Pohnpei Campus.

Student Information System Database (SIS)

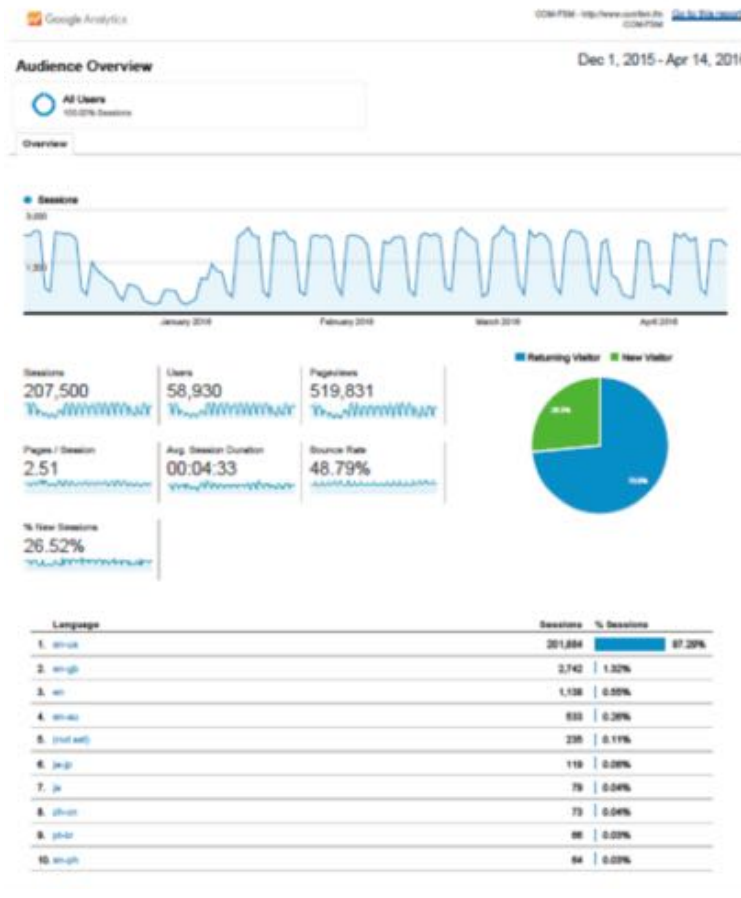
IEQA continues collaboration with Office of Admissions Records and Retention (OARR) for further reporting modifications and capabilities. Functionality and long term plans for the SIS have been discussed and include upcoming meetings with users and consultants to affect improvements. Spring 2016, the SIS developer will conduct training to new business office staff as well as work with OARR and IRPO on specific reporting needs.

Web and Publications

ITO has completed an initial COM-FSM promotional commercial that was also shared with the accreditation visiting team.

College of Micronesia-FSM will provide educational opportunities of the highest quality and will embrace the life-long pursuit of knowledge and the enrichment of the diverse Micronesian communities we serve.

Other data of interest



Become a learning organization through development of a learning culture guided by learning leaders. The College of Micronesia-FSM will operate under the assumptions that learning is a skill and is worthy of investment and mastery, and that the communication of information and participatory governance are pivotal to organizational success. There will be support of the time, energy, and resources necessary to foster critical reflection and experimentation towards institutional improvement through double-loop learning and systematic thinking.

▶ COOPERATIVE RESEARCH & EXTENSION

VP Walter James Currie

On-going Research under Agriculture Experiment Stations

The primary focus of the CRE research component is food security and promotion of nutritious foods for our islands. Research is on-going in all states with the following focuses in each state.

Yap AES

Dr. Muru has developed methods for Yapese farmers to build their soil and provide significant vegetable for home consumption and sales. His projects include:

Hatch projects

1. Climate-Smart Agriculture to Enhance Food Security in the Federated States of Micronesia. The project's objective is to develop and evaluate appropriate climate-smart strategies to enhance vegetable production.
2. Role of biochar in improving the fertility of volcanic red soils in Yap, The research project's objective is to test the effect of biochar on crop production in the degraded soils of Yap.

External Project Value of \$650,000 plus to FSM

1. Outreach and technical assistance program for socially disadvantaged farmers in Yap funded by USDA-Office of Advocacy and Outreach. The projection provides outreach, technical assistance and extension education in vegetable gardening/small farm activities, poultry and swine production.
2. Climate Resilient Adaptation and Mainstreaming Project funded by USAID under Pacific American Climate Fund. The project's objective is to enhance the climate resilience of target communities in Yap by providing outreach, technical assistance and extension education in soil management, value addition and water conservation.

Dr. Muru was elected as 2015 fellow of the International Society for Noni Science by World Noni Research Foundation.



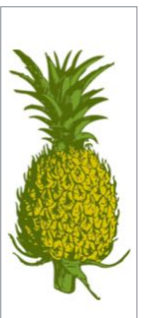
Dr. Murukesan Krishnapillai (Dr. Muru), of the Yap Cooperative Research and Extension has been bestowed with the Fellowship of the International Society for Noni Science. He was awarded for his outstanding contributions to Noni research and science during its Annual General Body Meeting held in conjunction with the 2nd World Noni Congress at S.R.M. University in Chennai, India on 19th March 2016.

He has also represented COM-FSM at the international Noni conference and at the Southern Region Sustainable Agriculture conference.

Kosrae AES

Multi-State Projects:

1. Black Pepper Micropropagation for Elite Seeding Production: Comparison of Local Practices and Commercial Cultivation Methods. The project's objectives for FY 2016 are to: (a) collect black pepper germplasm and establish in vitro cultures of collected germplasm; (b) develop efficient micropropagation protocol for multiplication of collected germplasm; and (c) develop acclimatization and nursery management systems to produce elite seedlings for commercial cultivation.
2. Pineapple Micropropagation and Commercial Cultivation to Enhance Productivity in Micronesia. The project's objectives are to: (a) collect pineapple germplasm of local cultivars and establish in vitro cultures of collected germplasm; (b) refine micropropagation protocol for multiplication of collected pineapple germplasm; and (c) optimize acclimatization and nursery management systems to produce elite seedlings for commercial pineapple cultivation.



Continued to page 6



Student success is our focus.

On-going research continued from page 5.

Research Project
In Vitro Selected and Ex Vitro Evaluation for Salt Tolerance in Cassava. The research project's objective are to: (a) collect appropriate germplasm of cassava; and (b) establish in vitro cultures of collected cassava germplasm.

Pohnpei AES

1. Cassava Project: Collaborative activities with Dr. Lolita Ragus.
2. Soils Project: Revised plans. Held meetings with potential collaborators. This project will be going into full swing in April.
3. Breeding for TLB-Resistant Taro. Have started discussions on this collaborative (SPC/CRE/Agric Office) project to breed for varieties resistant to TLB (Taro Leaf Bright).



Dr. Tuivalagi is currently representing COM-FSM TO Global Soil Partnership (GSP) Secretariat in Rome to review and finalize the draft Voluntary Guidelines for Sustainable Soil Management (VGSSM) which has been prepared by the Intergovernmental Technical Panel on Soils.

Chuuk AES

1. Research: Collaborative work with Dr. Nat Tuivalagi on Cassava. CRE Chuuk responsibility is cultivar characterization and determination of yield potential in these nine local cassava cultivars.
2. Hatch Projects: (1) Effects of Pruning Cassava in Growth, Storage and Eating Qualities- to determine appropriate stage of maturity to prune to boost yields, prolong storage at room temperature and improve eating qualities; and (2) Collection and Evaluation of Local Sweet Taro in Chuuk, FSM.

Research Abstract entitled "FSM Giant Swamp Taro Salinity Tolerance Evaluation", which was peer reviewed for quality, relevance and originality, was accepted for oral presentation at the 3rd International Conference on Agriculture and Forestry to be held in Manila, Philippines on June 1-3, 2016. This research was funded by the Tropical and Subtropical Agricultural Research (TSTAR) Grant/United States Department of Agriculture.

Cooperative Extension Services: Accomplishments

Cooperative Extension Services: Accomplishments

1. Aquaculture Program: In Pohnpei Sekere community people were involved in the measurement and weighing of juvenile sea cucumber growth development. Over 20 Elementary school students participated. The outreach provided technical assistance in hatchery and grow-out net cage operation of sea cucumber for entrepreneurs. Agents conducted a sea cucumber spawning which obtained 3.2 million eggs.

2. Global Food Security and Hunger Program (Each State has active GFSH programs).

- Chuuk and Pohnpei agents continue to provide advisory services and assistance to communities and individuals affected by the El Nino related drought on agriculture production in those states. Agents in Pohnpei also assisted the national government Resources and Development office with pre-testing of the National Agricultural Census instrument in preparation for the complete survey in summer 2016. Agents in Chuuk assisted government to present the 1st Chuuk Trade Fair held on November 18-19 at Andersen Field at Weno. Agents in Yap, Chuuk and Kosrae published numerous extension level brochures and other publications for distribution to communities served.
- Kosrae and Yap CES focused on economic development and entrepreneurship. In Kosrae one farmer has received total of \$1,150.00 from sale of products. Three mini nurseries were established. In Yap successes continue to happen with chickens and eggs. Today there are 30 family operations all over Yap ranging from around 10 to 300 laying chickens. In addition, vegetable production is encouraged in the outreach programs and demonstrations.

At present, there are 55 families continuing and new families and individuals actively growing vegetables.

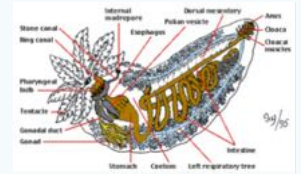
3. Families, Youths and Communities Program: Kosrae, Yap and Chuuk: This program focuses in developing livelihood skills in sewing, cooking and handicraft making for augmenting family incomes and encouraging creation of small business enterprises through entrepreneurship training. Efforts are made to engage youth in sports and community projects.

COOPERATIVE EXTENSION SERVICE

The Cooperative Extension Service is the first contact for many Micronesians with the College of Micronesia-FSM. Agents of the CRE address six program areas approved by the US Department of Agriculture in an effort to improve the health and economy of the nation.

Aquaculture Research: The Pohnpei COM Sea Cucumber Project

The Pohnpei COM Sea Cucumber project continues to carry out research, training technology and information dissemination, and improvement of grow-out culture techniques on operation of sea cucumber in the hatchery. The recent spawning conducted at Nett Point hatchery. The spawning operation includes: brood stock collection; spawning induction; larval rearing; and micro-algae culture. The spawning was conducted to determine use of water quality and stocking density. Four tanks and raceway tanks were all stocked with 480,000 fertilized eggs.



from larvae rearing section to the grow-out section.

Over 10,000 juveniles of sea cucumber were transferred

Nett Point hatchery is maintaining about 150,000 pentactula of sea cucumber, which are almost ready to become juveniles. Juveniles will then be transfer to grow-out section at age of 45 days, and continued to be monitored the growth development before final transfer into the farm cages in the communities. There were over 2,261 transferred to the demonstration cages sites.

4. **Childhood Obesity Program.** In all states this is a critical program with non-communicable diseases rated the number one health issue in the country. Nutrition and agriculture agents in all states addressed this program through a two pronged approach focused on the improvement of diets and increase in exercise. Agents promote home gardening as a way to include both approaches.
 - Pohnpei CES agents displayed healthy cooking recipes using TARO AND BREADFRUIT FLOUR (taro flour pizza recipe and kangkong wrap in taro flour for taste) and distributed vegetable seedlings to the people in the communities.
 - Chuuk CES promoted and demonstrated preparation of healthy snacks for the school children and families in Weno including coconut biscuits, coconut bread sweet potato leaf chips and breadfruit chip productions.
 - Kosrae CES extension agent visited two different schools and completed nutrition course outline with lessons on MyPlate, nutrients, Food Safety and Why Exercise is Wise.
 - Yap CES agents provide technical assistance and training for families and communities in crop and vegetable production in addition to on-going nutrition activities.
5. **Food Safety Program:** All offices focused effort in this program through the Expanded Food and Nutrition Education Program (EFNEP), a separately funded outreach program to encourage healthy food choices and preparation.
6. **Climate Change Program:** Only the states of Pohnpei and Chuuk are addressing this issue through the promotion of salt tolerant crops, coastal erosion control and reaction to drought.

▶ **ENROLLMENT MANAGEMENT & STUDENT SERVICES**

VP Joey Oducado

College administered COMET to 1,438 students: 77% admitted and 23% non-admitted

| State | Degree | | ACE | | Certificate | | Non-Admit | | Total | n % of N |
|--------------|------------|------------|------------|------------|-------------|------------|------------|------------|--------------|-------------|
| | Count | % of n | Count | % of n | Count | % of n | Count | % of n | | |
| Chuuk | 63 | 16% | 43 | 11% | 90 | 23% | 192 | 49% | 388 | 27% |
| Kosrae | 47 | 34% | 31 | 22% | 34 | 24% | 27 | 19% | 139 | 10% |
| Pohnpei | 214 | 30% | 190 | 27% | 221 | 31% | 86 | 12% | 711 | 49% |
| Yap | 79 | 40% | 46 | 23% | 49 | 25% | 26 | 13% | 200 | 14% |
| Total | 403 | 28% | 310 | 22% | 394 | 27% | 331 | 23% | 1,438 | 100% |

The college administered the COM-FSM Entrance Test (COMET) to 1,438 high school seniors and other students late January to mid-February 2016. However, this figure does not include seniors from Neighboring Islands Community High School on Woleai, Yap State, the three high schools in Chuuk: Weipat High School, Moch High School, and Mortlocks High School, and the 30 seniors from the Kwajalien Atoll High School. RMI. Of the 1,438 students who took this year's COMET, 403 (28%)

are placed as degree-level, 310 (22%) as Achieving College Excellence-level, and 394 (27%) as certificate-level. 331 (or 23% of 1,438) students are non-admitted. Table above shows the distribution in placement/non-placement by state.

If compared to the 2015 COMET, this year's COMET has a lower percentage in terms of non-admitted students. 30% of the 1,452 students were non-admitted in the 2015 COMET.

Table 1.0. Spring 2015 versus Spring 2016 COMET in percent of admitted and non-admitted students by institution.

| Institution | State | Spring 2015 | | | | | Spring 2016 | | | | |
|----------------|---------|--------------|------------|------------|------------|--------------|--------------|------------|------------|------------|--------------|
| | | Admit | | Non-Admit | | Total n | Admit | | Non-Admit | | Total n |
| | | Count | % of n | Count | % of n | | Count | % of n | Count | % of n | |
| Berea | Chuuk | 8 | 89% | 1 | 11% | 9 | 16 | 73% | 6 | 27% | 22 |
| CCA | Pohnpei | 15 | 100% | 0 | 0% | 15 | 19 | 100% | 0 | 0% | 19 |
| CHS | Chuuk | 73 | 36% | 129 | 64% | 202 | 74 | 37% | 125 | 63% | 199 |
| CSC | Chuuk | 29 | 58% | 21 | 42% | 50 | 26 | 76% | 8 | 24% | 34 |
| CSDA | Chuuk | 4 | 50% | 4 | 50% | 8 | 0 | 0% | 1 | 100% | 1 |
| Faichuk | Chuuk | 2 | 33% | 4 | 67% | 6 | 1 | 10% | 9 | 90% | 10 |
| KHS | Kosrae | 85 | 83% | 18 | 17% | 103 | 99 | 79% | 26 | 21% | 125 |
| KSC | Kosrae | 21 | 70% | 9 | 30% | 30 | 13 | 93% | 1 | 7% | 14 |
| MHS | Pohnpei | 85 | 83% | 18 | 17% | 103 | 81 | 88% | 11 | 12% | 92 |
| NMHS | Pohnpei | 82 | 69% | 36 | 31% | 118 | 102 | 89% | 13 | 11% | 115 |
| Nukuno | Chuuk | 1 | 14% | 6 | 86% | 7 | 4 | 67% | 2 | 33% | 6 |
| OICA | Pohnpei | 14 | 82% | 3 | 18% | 17 | 6 | 55% | 5 | 45% | 11 |
| OIHS | Yap | 20 | 61% | 13 | 39% | 33 | 12 | 60% | 8 | 40% | 20 |
| OLMCHS | Pohnpei | 31 | 100% | 0 | 0% | 31 | 23 | 96% | 1 | 4% | 24 |
| PICS | Pohnpei | 248 | 81% | 60 | 19% | 308 | 263 | 85% | 47 | 15% | 310 |
| PLHA | Chuuk | 4 | 25% | 12 | 75% | 16 | 3 | 60% | 2 | 40% | 5 |
| PSC | Pohnpei | 75 | 76% | 24 | 24% | 99 | 99 | 92% | 9 | 8% | 108 |
| PSDA | Pohnpei | 16 | 100% | 0 | 0% | 16 | 32 | 100% | 0 | 0% | 32 |
| SCA | Chuuk | 24 | 89% | 3 | 11% | 27 | 27 | 84% | 5 | 16% | 32 |
| SNHS-Fefan | Chuuk | 5 | 14% | 32 | 86% | 37 | 3 | 14% | 18 | 86% | 21 |
| SNHS-Tonoas | Chuuk | 0 | 0% | 14 | 100% | 14 | 1 | 6% | 16 | 94% | 17 |
| Xavier | Chuuk | 37 | 97% | 1 | 3% | 38 | 41 | 100% | 0 | 0% | 41 |
| YCHS | Yap | 10 | 100% | 0 | 0% | 10 | 16 | 100% | 0 | 0% | 16 |
| YHS | Yap | 106 | 81% | 25 | 19% | 131 | 93 | 89% | 12 | 11% | 105 |
| YSC | Yap | 16 | 84% | 3 | 16% | 19 | 41 | 87% | 6 | 13% | 47 |
| YSDA | Yap | 5 | 100% | 0 | 0% | 5 | 12 | 100% | 0 | 0% | 12 |
| Total N | | 1,016 | 70% | 436 | 30% | 1,452 | 1,107 | 77% | 331 | 23% | 1,438 |

College to launch 2nd College Fair

National COM-FSM National and Pohnpei Campuses will launch the 2nd College Fair on April 26, 2016. High school seniors and other students who placed into the college's programs via the COM-FSM Entrance Test (COMET), high

school principals, counselors, and parents will be invited during the fair. Activities included a brief program, career exploration through the various academic program booths, and others.

College celebrated 23rd Founding Day last April 1, 2016



The college celebrated its 23rd Founding Day on April 1, 2016, at the College's National Campus in Palikir. This year's Founding Day was celebrated as "Celebrating Student Success in a Diversified Community".

Queen of this year's Founding Day coronation ceremony with a total of \$1,735.00 raised for the College's Endowment Fund. Yap Student Organization (YSO) represented by Dominic Gadad and Jeanie Gabriel earned second place with a total of \$1,100.00. Third place went to Chuuk-Chok represented by Artray Irons and Jessica Reyes with a total of \$586.57 raised. Pohnpei Student Organization (PSO) represented by Alex Alexander and Mimi-Lane Weital came in fourth place with a total of \$300.00.

Each college campus conducted its own Founding Day activities. At the National Campus, a Coronation Ceremony was held at the FSM-China Friendship Sports Center on March 30, 2016. A Prince and Princess representing each team (red for Yap, white for Chuuk, green for Kosrae, and blue for Pohnpei National) paraded through the gymnasium. Winson Elley and Maggie Tolena of the Kosrae Student Organization (KSO) were crowned the King and

The coronation ceremony was followed by fun games on April 1st, held at the National Campus grounds where faculty, staff, and students competed with each other.

Results of the 2016 COM-FSM Founding Day Games
National and Pohnpei Campuses

| Categories | Outdoor Games | | | | | |
|------------------|-----------------|-----------|--------------------|-----------|------------------|----------------|
| | Basketball | | Volleyball | | Softball | |
| | Men | Women | Men | Women | Men | Women |
| Champion | KSO-A | NUKAP | Pohnpei National 1 | KSO | Pohnpei National | Pohnpei Campus |
| First Runner-Up | Pohnpei Campus | ChuukChok | Pohnpei Campus A | YSO | YSO | YSO |
| Second Runner-Up | National Campus | KSO | Pohnpei National 2 | ChuukChok | KSO | ChuukChok |

| Indoor Game (Badminton) | | |
|-------------------------|-----------------|------------------|
| Champion | First Runner-Up | Second Runner-Up |
| Pohnpei National | NUKAP | Pohnpei Campus |

National and Pohnpei Campus counselors met for a two-day workshop

National and Pohnpei Campuses Counselors met for a two-day workshop last February 8-9, 2016. The workshop was planned and designed by Pohnpei Campus

counselors as a way of strengthening collaboration between the counselors at both campuses. During these two days, the counselors were able to sit

Counselors continued from page 7.

together to prepare for the accreditation visit and also to align the counseling services to enhance student success. During this two-day workshop,

informational presentations by Financial Aid office and Title IX coordinator were also conducted.

Counseling Office hosted resume writing workshop

A resume writing workshop was conducted to 12 student participants. The purpose of the workshop is to help participants write resumes that will help prepare them for employment success. As such the counselors invited Mr. Dwight Edward, Assistant Secretary for the Division of Personnel Office at the FSM National Government, and Mr. Aisek Artui, Personnel Specialist III Division of Personnel Office, Pohnpei State Government to present to the participants effective tips and the process of applying

for employment at FSM National and Pohnpei State Governments.

Pretest and posttest were used to measure the outcome of the workshop. Out of the 12 students, 10 students completed the pretest. Out of the 10 students, 6 students (60%) were able to pass the pretest. At the end of the workshop, 100% of the students completed the survey and the result showed that 100% of the students pass the posttest.

College graduated 185 students last December 2015

The college graduated 185 students last fall 2015 semester during its 62nd Commencement Exercises last December 17, 2016. Additionally, five students were graduated under the baccalaureate program in elementary education offered in partnership with the University of Guam.



Ten from Chuuk Campus, three from Kosrae Campus, and 16 from Yap Campus.

The college graduated 185 students last fall. Four students who completed their Master of Education in Reading from the University of Guam also joined the college's commencement exercises.

Of the 185 COM-FSM graduates, 120 and 36 graduated from the National and Pohnpei Campuses, respectively.

Candidates for spring 2016 graduation

The college's Office of Admissions, Records and Retention (OARR) reported 249 candidates for spring 2016 graduation. Of the 249 candidates, 147 are from the National Campus, 59 from Pohnpei Campus, 21 from Chuuk Campus,

seven from Kosrae Campus, and 15 from Yap Campus. National, Pohnpei, and Chuuk Campuses will hold their commencement exercises on May 12, 2015; while Kosrae and Yap Campuses on May 17 and 18, respectively.

Health Services: Recorded visits to the college's National Campus dispensary, December 2015 to April 15, 2016

| Types or Purpose of Visits | December 2015 | | January 2016 | | February 2016 | | March 2016 | | April 1-15, 2016 | | Total |
|---|---------------|-----------|--------------|------------|---------------|------------|------------|------------|------------------|-----------|--------------|
| | Student | Staff | Student | Staff | Student | Staff | Student | Staff | Student | Staff | |
| Viral Syndrome/URI | 9 | 6 | 34 | 18 | 37 | 18 | 33 | 13 | 16 | 6 | 190 |
| Minor injuries | 12 | 1 | 46 | 6 | 45 | 6 | 36 | 2 | 27 | 0 | 181 |
| General body aches/pains | 23 | 6 | 62 | 32 | 66 | 16 | 54 | 23 | 28 | 14 | 324 |
| Eye/ear/nose-related problems | 7 | 1 | 24 | 1 | 13 | 2 | 34 | 1 | 7 | 3 | 93 |
| Dental Problem | 0 | 0 | 1 | 0 | 5 | 0 | 1 | 1 | 1 | 0 | 9 |
| Skin diseases/infection | 8 | 2 | 18 | 6 | 25 | 7 | 27 | 14 | 9 | 4 | 120 |
| Gastro-intestinal problem | 1 | 2 | 5 | 6 | 5 | 7 | 8 | 9 | 5 | 5 | 53 |
| Genitourinary problem | 1 | 0 | 0 | 1 | 1 | 0 | 0 | 0 | 0 | 0 | 3 |
| Personal and Family Problem Counseling | 0 | 0 | 0 | 0 | 0 | 0 | 0 | 0 | 0 | 0 | 0 |
| FP IEC include pregnancy testing and contraception administration | 20 | 2 | 34 | 4 | 22 | 1 | 12 | 0 | 24 | 6 | 125 |
| Other Health-related IEC and Consultation | 2 | 0 | 0 | 0 | 0 | 0 | 2 | 0 | 0 | 0 | 4 |
| STIs Screening/Counseling and follow-up | 1 | 0 | 1 | 0 | 164 | 20 | 20 | 0 | 2 | 0 | 208 |
| Screening of NCD and Communicable Diseases including follow-up | 0 | 7 | 32 | 11 | 108 | 26 | 24 | 15 | 117 | 19 | 359 |
| Seasonal flu vaccination and other immunization updates | 0 | 0 | 0 | 0 | 0 | 0 | 0 | 0 | 85 | 22 | 107 |
| Prescription fills/refills | 2 | 3 | 5 | 5 | 9 | 3 | 4 | 9 | 2 | 4 | 46 |
| Health Maintenance and prophylaxis | 5 | 3 | 24 | 17 | 34 | 19 | 21 | 30 | 14 | 14 | 181 |
| Referrals | 6 | 1 | 11 | 1 | 5 | 2 | 7 | 3 | 8 | 0 | 44 |
| Others | 13 | 5 | 23 | 2 | 84 | 2 | 49 | 7 | 10 | 0 | 195 |
| Total | 110 | 39 | 328 | 110 | 623 | 129 | 332 | 127 | 355 | 97 | 2,242 |

End-of-fall 2015 academic standing

| Campus | Academic Probation | | Continued Academic Probation | | Academic Suspension | | Good Academic Standing | | Total n |
|--------------|--------------------|------------|------------------------------|-----------|---------------------|-----------|------------------------|------------|--------------|
| | Count | % of n | Count | % of n | Count | % of n | Count | % of n | |
| National | 86 | 9% | 25 | 3% | 17 | 2% | 828 | 87% | 956 |
| Pohnpei | 120 | 19% | 23 | 4% | 13 | 2% | 471 | 75% | 627 |
| Chuuk | 36 | 15% | 8 | 3% | 5 | 2% | 185 | 79% | 234 |
| Kosrae | 28 | 13% | 19 | 9% | 8 | 4% | 166 | 75% | 221 |
| Yap | 24 | 13% | 10 | 5% | 3 | 2% | 145 | 80% | 182 |
| Total | 294 | 13% | 85 | 4% | 46 | 2% | 1,795 | 81% | 2,220 |

The college's academic standards defined "good academic standing" as "having a cumulative grade point average (GPA) of 2.0 or above."

Emphasize academic offerings in service to national needs. The College of Micronesia-FSM will increase the number of 4-year program opportunities while also strengthening the career and technical educational opportunities for non-college-bound students.

VPEMSS : College received \$25,000 scholarship check from APIASF

The college received \$25,000 scholarship check from the Asian and Pacific Islander American Scholarship Fund (APIASF) last January 25, 2015. APIASF Asian American and Native American Pacific Islander-Service Institution (AANAPISI) awarded ten COM-FSM students scholarship for 2015-2016 academic year. The awards are applied to the students' educational expenses (or cost of attendance), such as cost of tuition, fees, housing, local transportation, books and allowable expenses).

Pacific Islander American Scholarship Fund (APIASF) to provide financial support to eligible low-income Asian and Pacific Islander students (AAPI).

On April 13, 2016, the college's VPEMSS who is also the designated point-of-contact under the college and APIASF MOU, was informed by APIASF program assistant that several students have qualified as finalists for the APIASF General Scholarship. APIASF had notified these students through emails and were asked to submit there unofficial transcripts and 2016-2017 Student Aid Report (SAR) by April 20, 2016.

In May 28, 2015, the college entered into a memorandum of agreement with the Asian and

Supplemental Educational Grant (SEG) available to students for summer 2016

The Financial Aid Office (FAO) informed students that there will be Supplemental Education Grant (SEG) for the summer 2016 session. The grant will assist to pay for 60% of student tuition for the summer.



Regular registration for summer 2016 is scheduled on May 26-27,

2016, with first day of instruction on May 30, 2016.

College awards \$3.8 million Pell to 1,548 students as of April 14, 2016

The college's Financial Aid Office (FAO) reported awarding \$3,856,523.82 Pell Grant to 1,548 students as of March 14, 2016. The 1,548 students represent 83% of the college's 1,858 head counts registered this spring 2016 semester. Table below shows the distribution by campus.

| Campus | Spring 2016 Enrollment | Pell Recipients | Recipients in % of Enrollment | Award in US\$ |
|--------------|------------------------|-----------------|-------------------------------|---------------------|
| National | 868 | 746 | 86% | 2,038,921.6 |
| Pohnpei | 476 | 408 | 86% | \$885,677.00 |
| Chuuk | 194 | 153 | 79% | \$384,029.00 |
| Kosrae | 158 | 108 | 68% | \$240,972.61 |
| Yap | 162 | 133 | 82% | \$306,923.61 |
| Total | 1858 | 1548 | 83% | 3,856,523.82 |

Faustino Yarofaisug, director of FAO, also reported that the college awarded last fall 2015, \$4,798,184.56 to 1,919 students (or 86% of the college's 2,221 fall 2015 enrollment).

139 students received \$130,354.50 from FSM National, State, and other scholarships

| Scholarship | Fall 2015 Semester | | Spring 2016 Semester, as of April 14, 2016 | |
|---|--------------------|-------------------|--|------------------|
| | Recipients | In US\$ | Recipients | In US\$ |
| Asian and Pacific Islander American Scholarship Fund (APIASF) | 0 | 0.00 | 10 | 25,000.00 |
| Chuuk State Scholarship | 36 | 24,800.00 | 40 | 28,150.00 |
| FSM National Scholarship | 28 | 29,070.00 | 27 | 27,570.00 |
| Kosrae State Scholarship | 16 | 8,000.00 | 5 | 2,500.00 |
| Rotary Club of Pohnpei Scholarship | 0 | 0.00 | 1 | 250.00 |
| Yap State Scholarship | 39 | 43,465.00 | 29 | 24,900.00 |
| Pohnpei State Scholarship | 3 | 1,500.00 | 1 | 500.00 |
| CFSM Chuuk | 27 | 37,000.00 | 0 | 0.00 |
| CFSM Kosrae | 28 | 27,891.14 | 10 | 14,095.50 |
| CFSM Yap | 46 | 49,182.30 | 16 | 7,489.00 |
| TOTAL | 223 | 220,908.44 | 139 | 130,454.5 |

Director of FAO also reported that last spring 2015, there were 107 students who received \$88,345.00 of financial assistance from the FSM National, State, and other scholarships. He further added that in fall 2014, \$125,745.00 of scholarships were awarded to 160 students.

College submitted TAP-FSM-2015-2 grant project progress report to OIA, US Department of Interior

On July 14, 2015, the Office of Insular Affairs (OIA), US Department of Interior, notified the college that its proposal had been selected to receive Technical Assistance Program (TAP) Grant amounting to \$103,160.00, subject to award period beginning July 6, 2015, and ending, September 30, 2017.

The college's TAP grant project is composed of three major programs: (a) student success study component; (b) retention program; and (c) pathway to graduation program. On February 29,

2016, VP EMSS who is also the TAP grant project manager, submitted to OIA the grant's progress report and interim financial report.

The progress report included accomplishments during August 15, 2015, to December 30, 2015, period, such as work related to the college's Foundations of Excellence, and the Gateways to Completion with the John N. Gardner Institute for Excellence in Undergraduate Education.

Health Services launched several on-campus activities

- Word AIDS Day:** December 4, 2015, with the theme "Ending the AIDS epidemic as part of the sustainable development goals: Unlock your potential, unlock the future you want." The event was participated by about 350 students, faculty and staff.
- World Leprosy Day:** February 11-12, 2016, with the theme "Preventing Leprosy in Children." Among the activities during the event were screening for leprosy and distribution/dissemination of IEC materials. About 100 students, faculty, and staff participated during this event.
- STIs/HIV/AIDS Screening:** February 15-19, 2016, with about 150 participants. The activities included voluntary confidential counseling and testing (VCCT), issuance of contraceptive methods, and distribution/dissemination of IEC materials.
- World TB Day:** April 8, 2016, with the theme "Unite to end TB" participated by about 350 students, faculty and staff. The events included special presentation and updates on TB disease in the FSM, seasonal influenza vaccinations, screening for hypertension, and distribution/dissemination of IEC materials.



Peer Counseling Center launched several activities

- Accidental Prevention Month:** December 19-31, 2015, with the theme "Unleashing the collective power of communities." The event included essay contest, and a basketball tournament participated by 20 teams.
- Substance Abuse Prevention (SAP) Outreach:** December 21, 2015, to 12 female residence hall students.
- Peer to Peer Training** held last January 4, 2016.
- Valentine's Day Skit.** February 12, 2016, with the theme "The broken love, who is behind it?" The activity was participated by 62 students.
- Kick Butts Day (KBD).** March 18, 2016, with the theme "#i Kick Butts, Do you?" About 84 students participated in the activity.
- A retreat "**Rejuvenating me**" held last March 23, 2016, with 15 participants.
- A **family planning outreach** (Early pregnancy) to members of the Kosrae Student Organization (KSO) last April 15, 2016.

563 students received \$84,578.00 from SEG-Work Study Program

| Campus | Total Applied | Total Worked | On campus | Off Campus | Total Earned |
|--------------|---------------|--------------|------------|------------|------------------|
| National | 307 | 305 | 178 | 127 | 45,713.75 |
| Pohnpei | 188 | 186 | 98 | 88 | 29,046.00 |
| Chuck | 22 | 20 | 18 | 2 | 3,100.00 |
| Yap | 36 | 35 | 31 | 4 | 4,461.25 |
| Kosrae | 19 | 17 | 9 | 8 | 2,257.00 |
| FSM FMI | 50 | 0 | 0 | 0 | 0.00 |
| Total | 622 | 563 | 334 | 229 | 84,578.00 |

The college's Financial Aid Office (FAO) also reported that 548 students received \$98,316.75.00, from the SEG Work-Study Program last fall 2015.

Be financially sound, fiscally responsible, and build resources in anticipation of future needs. The College of Micronesia-FSM will generate diversified revenue sources, create an allied foundation, and accumulate reserves and endowment assets.