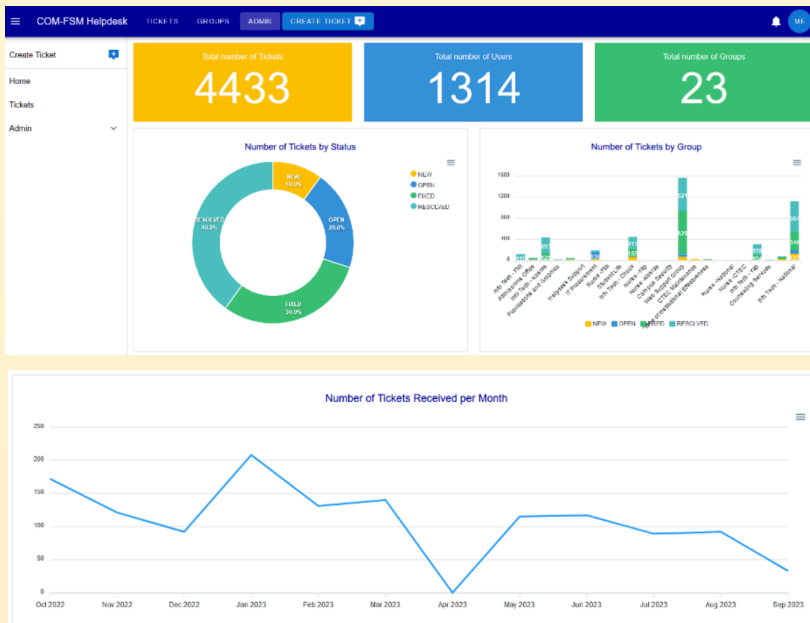


VPIEQA: ACCREDITATION... from page 6

**UPDATES:
INFORMATION TECHNOLOGY**

Starlink is being tested by ITO to ensure it can be deployed successfully in Kosrae. The IT team has been assisting with updating course outlines with collaboration from the VPIA office, with 29 course outlines posed and updated as of this report.. Business Computer Lab turnover was completed with 30 computers replaced with newly installed desktop computers equipped with software requested by faculty for their instructional use.

Incoming tickets from HelpDesk covering the web support group and tech support at National campus are shown below.. All web support incoming tickets mainly cover requests to assist in either updates for renewal of contracts, new contracts, Office 365 accounts, open vacancies,

**ASSESSMENT TEAM**

The Assessment Team has been revived with membership representing all departments of the college. The team is tasked with evaluating program reviews and assessment plans for both academic and non-academic units for improvement and to inform decisions on resource allocation. VPIEQA worked with VPIA and DAP to update the Instructional Program Review schedule as part of the assessment process.

**UPDATES:
PUBLICATIONS & GRAPHICS**

The Office of Publications and Graphics completed the revision of the 2023-2024 calendars and has been posted and shared on the college website. The June issue for the Kaselehlic Press included news of the college's accreditation being reaffirmed and vacancies.

College Accreditation "Reaffirmed"

Palau, Palau (June 15, 2023) - The eagerly anticipated outcome of the College of Micronesia-FSM's Accreditation status has been received, with the College receiving the esteemed designation of "Reaffirmed". The confirmation and comprehensive details of the decision were conveyed to Dr. Theresa Koroivulaano, the President of the College, through an official letter from the Accrediting Commission for Community and Junior Colleges (ACCJC) on June 15, 2023. The letter explicitly stated that the Commission has taken action to reaffirm the College's Accreditation for a period of seven years.

EMPLOYMENT OPPORTUNITIES

Administrative Specialist III (Recruitment and Repatriation)

Reporting to the HR Director, the Administrative Specialist III will carry out the major following functional responsibilities and additional necessary duties to meet HRD needs and programs.

Student Services Specialist I

Under the direction of the college's Registrar, the Student Services Specialist I Records Specialist acts as the resource person for technical and complete inquiries and information requests relating to the college's records and/or documents management services. The staff is expected to function independently in accordance with college and applicable external statutory requirements, subject only to minimal general direction and review.

The College of Micronesia - FSM is an equal opportunity employer. FSM Citizens are encouraged to apply



COOPERATIVE RESEARCH AND EXTENSION

**UPDATES: COOPERATIVE
RESEARCH AND EXTENSION****ADMINISTRATIVE**

CRE department currently has 65 CRE positions of which there are 16 positions on special contracts, 10 vacant positions, and 13 new and vacant positions. 26 positions are full-time/filled positions. 65% of needed positions are filled. The staff structure aligns with the current research needs of the four states and allows for the implementation of activities under the six critical issues, i.e., Lack of Food Production and Food Insecurity, Sustainable Aquaculture Development, Climate Change Challenges, Youth and Family Issues in the Communities, Incidence of Food and Waterborne Illnesses, and Childhood Obesity, that are critical importance in the Micronesian region.

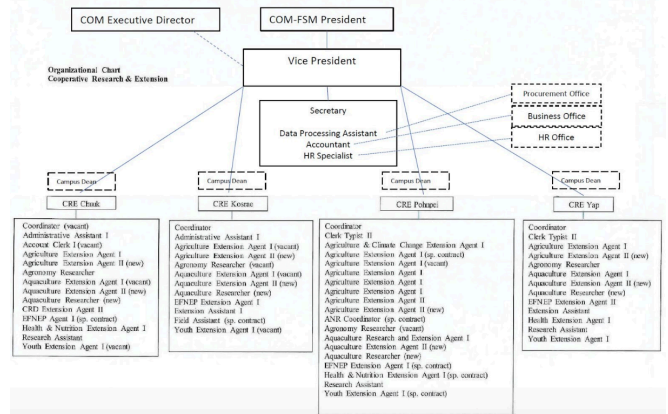


Figure: Updated Organizational Structure for CRE Department

**COLLEGE OF MICRONESIA LAND GRANT BOARD MEETING IN PALAU,
AUGUST 21-22, 2023**

Photo: Participants of the COM Land Grant Board meeting in Palau, August 21-22 were the members of the Board of Regents from RMI, FSM, and Palau, CMI President Irene Taafaki and her CRE/Land Grant staff, COM-FSM President Theresa Koroivulaano and her CRE/Land Grant staff, and PCC President Patrick Tellei and his CRE/Land Grant staff.

On Monday, August 21, and Tuesday, August 22, 2023, the College of Micronesia (COM) Board of Regents met at Palau Community College (PCC) in Koror for their quarterly meeting. Led by the Chairman of the Board, Dr. Emais Roberts, the team engaged in discussions at the meeting, primarily focusing on improving food security and economic development in the three-member countries that are part of the COM system, namely the Republic of the Marshall Islands (RMI), the Federated States of Micronesia (FSM), and the Republic of Palau (ROP).

The COM Board comprises three members, each representing the three-member countries. The current COM Board members include the Chairman, Dr. Emais Roberts, Governor of Pohnpei, Palau (ROP), Vice-Chair Mrs. Suzanne Gallen (FSM), and Regent Hon. Wilbur Heine, the Minister of Education, Sports & Training (RMI)

At the Board meeting, the following were approved by resolution to support the college:

- Approval of FY24 budget for CRE programs @ \$1.78 million for CES, AES, and EFNEP
- \$30,000 from their Endowment Fund to support agriculture and marine science programs. Board also supports continuing this annual contribution to support these programs at the college.

CRE: UPDATES ... from page 7

BIGGEST LOSER CHALLENGE

A total of 324 staff, faculty, and students have registered and are participating in the Biggest Loser Challenge. The program aims to encourage and empower the college community towards healthy living and better health. The competition will judge against BMI, waist circumferences, and blood pressure to select “winners” at the end of the program in December 2023.

	Total # participants	# of staff-(male)	# of staff – (female)	#of student – (male)	# of student – (female)
Chuuk	47	17	19	4	7
Kosrae	38	8	10	2	18
CTEC/National	70	26	35	4	5
Yap	123	39	40	23	21
FMI	46	16	3	26	1



COOPERATIVE RESEARCH & EXTENSION: PROGRAM HIGHLIGHTS

KOSRAE | POHNPEI | CHUUK | YAP

AQUACULTURE PROGRAM

Ongoing programs and activities in aquaculture research and extension target valuable species such as sea cucumber, giant clam, and rabbitfish. During the reporting period, outreach and awareness activities reached more than 300 participants including youth in Yap, Pohnpei, and



Photo: A women’s group from Sokehs, Pohnpei visited the aquaculture hatchery facility at Nett Point to learn more about aquaculture potential and opportunities to support their community initiatives.

CLIMATE CHANGE PROGRAM

Ongoing AES Researcher Dr. Murukesan Krishnapillai served as a Technical Contributor to *Climate Change in the Federated States of Micronesia*. Pacific Islands Regional Climate Assessment Report for the FSM, East-West Center, Honolulu; July 2023. The climate change adaptation work of Yap CRE is highlighted in this report. The report provides an assessment of the state of knowledge about climate change indicators, impacts, and adaptive capacity of FSM communities. Sections of the report address the science of climate change, the status of several key climate indicators in the FSM, how climate change affects communities, how climate change affects key sectors, what to consider in responses, and additional information and research needed to enable resilience and adaptation.



CLIMATE CHANGE PROGRAM

The ongoing program provides technical assistance in efforts to improve local breeds of pigs using artificial insemination and basic health treatments. During the reporting period, a total of 47 training sessions were conducted on various swine husbandry and management practices, such as breeding and reproduction, basic swine medication and treatment, and piglet castration. 91 participants (56 youths and 35 adult clients) benefited from the program.



COOPERATIVE RESEARCH & EXTENSION: PROGRAM HIGHLIGHTS

KOSRAE | POHNPEI | CHUUK | YAP



Photo: Participation in college fairs. Students and youth participants are major participants of the swine extension program to increase their awareness and knowledge of the contribution of this agriculture sector to family and community food security.

FARMER FOCUS CONFERENCE: ENRICHING WELLNESS IN OUR COMMUNITIES

On June 2023, a collaborative effort to help agricultural producers manage stress made its way to Pohnpei in Agricultural producers, workers, and professionals took part in a Farmer Focus Conference focused on mental health on June 28 at the College of Micronesia-FSM campus in Palikir. The Farmer Focus Project is a USDA-funded Western Region Agricultural Stress Assistance Program (WRASAP) extended to Guam and Micronesia out of Washington State University. The conference that took place featured customized content based on data from a survey conducted by CRE across the FSM last year to identify the top stressors in the agriculture profession in the four Micronesian island states.

The reports revealed that 73% of ag workers surveyed and 80% of farmers/producers surveyed throughout Micronesia felt a medium level of stress on the Perceived Stress Scale, a commonly used psychological questionnaire, while 9% of workers and 15% of farmers reported a high-stress level. The report indicated that these individuals would benefit through interventions such as counseling and other positive coping mechanisms.

The farm workers surveyed reported their top stressors as grief over the death of a loved one or friend, crop and plant diseases, and financial worries. For farmers/producers, the top stressors were crop and plant diseases, COVID-19, and family-related stress. The respondents also shared that they would find value in education related to financial management, nutrition/cooking, and physical activity.

During the conference, a Mental Health First Aid certification course was conducted for extension and other professionals in the community who work directly with farmers. In the training, certified instructors taught 15 participants about risk factors and warning signs of mental health problems, crisis and suicide intervention skills, and self-care and referral resources. Fifteen participants received certification in Mental Health First Aid.



Photo: Field staff train community members in compost preparation using the 'green and brown alternative' method.

CRE: PROGRAM HIGHLIGHTS



FSM Farmer Focus: Mental Health First Aid Training



Photo: Regional partners of the Western Region Agricultural Stress Assistance Program: (From left) Dr. Kuan-lu Chen, assistant professor and Farmer Focus Project lead, University of Guam; Dr. Theresa Koroivulaono, president, College of Micronesia-FSM; Don McMoran, project director, WRASAP; Julie Jesmer, program coordinator, WRASAP; and Steven Young-

PROJECT IN YAP FUNDED BY THE ITALIAN GOVERNMENT

The project, 'Enhancing water security and climate resilient food systems for the displaced atoll population in Yap,' aims to enhance access and sustainable use of quality water and food systems in Yap. The project will assist the displaced atoll communities with necessary outreach, technical assistance, and training opportunities that will enable them to adopt, maintain, improve, and monitor water and food systems in the context of climate variability and change. The planned adaptation strategies will be an important step to assist the government towards a pathway for climate-resilient development.

The Italian Ministry for Environment, Land and Sea funded the project under the Italy-Pacific SIDS Climate Cooperation Program. In 2007, Italy and Pacific SIDS established a partnership that benefits vulnerable island nations in their endeavor to fight the impacts of climate change. The partnership program supports PSIDS under two broad areas: i) Sustainable Energy and ii) Climate Change Adaptation Program. The Key outputs of this project include:

1. Improved infrastructure for rainwater harvesting and storage.
2. Education and awareness on sustainable water use and conservation.
3. Enhanced climate-resilient food systems.

The project will employ a three-pronged approach:

1. Focus on implementing adaptation measures, addressing climate change impacts on key infrastructure element – water.
2. Strengthening water conservation measures and capacities to provide an enabling environment for climate-resilient development.
3. Establishing climate-resilient food systems for livelihood enhancement of atoll communities.

The outputs and outcomes will contribute to the Framework for Resilient Development in the Pacific: An Integrated Approach to Address Climate Change and Disaster Risk Reduction (FRDP), the Sendai Framework for Disaster Risk Reduction, the Paris Agreement, and the Sustainable Development Goals, especially Goal 2: zero hunger, Goal 6: clean water and sanitation, Goal 13: climate action, and Goal 15: life on land.

CRE: PROGRAM HIGHLIGHTS ... from page 9

Photo: Field preparation for staple crop (sweet potato) production.

Italy – Pacific SIDS Climate Cooperation Program sponsored project currently engages 156 households (1,459 community members) across five atoll community settlements on Yap Proper in volcanic soil management. Proper soil nutrient management is crucial for establishing climate-resilient staple crops in degraded soils. The project started in March 2023 and expected to be completed by February 2026. Three full-time staff including 1 project coordinator and 2 field assistants would be employed under the project.

PROJECT FUNDED BY GREEN CLIMATE FUND THROUGH MICRONESIA CONSERVATION TRUST



SAP20 “Climate Resilient Food Security for farming households across the Federated States of Micronesia” is part of the national efforts to focus on increasing the resilience of FSM’s most vulnerable communities to climate change-induced food insecurity. Planned measures include introducing sustainable agricultural practices and developing climate-resilient agriculture value chains.

CRE is managing Component 2 of the project with the goal of enhancing the food security of vulnerable households by introducing climate-smart agriculture (CSA) practices. Enhancing the food security of vulnerable households by introducing CSA practices (establishing agroforestry systems, capacity building for extension agents, awareness building and training for FSM households, and developing reserve capacity for climate disruption) will increase availability, stability, and accessibility of locally grown food for food security, improve nutritional outcomes for vulnerable households, develop new opportunities for income and household productivity and drive a national change in awareness and utilization of CSA for improved resiliency.

Implementation of the project started in October 2021 with the aim to complete all activities by December 2026. A budget of \$5,696,400 has been awarded for the successful implementation and completion of required activities under Component 2. More than 80 participants from various sectors of the communities across the FSM are currently undergoing training for certification as extension agents and trainers in CSA including poultry care and management.

CRE: PROGRAM HIGHLIGHTS**YOUTH PROGRAMS**

- Wide range of activities under the youth programs, such as handicrafts, sewing, counseling.
- Farmer Focus Conference.
- Mental Health First Aid Certification - 15 Participants

