

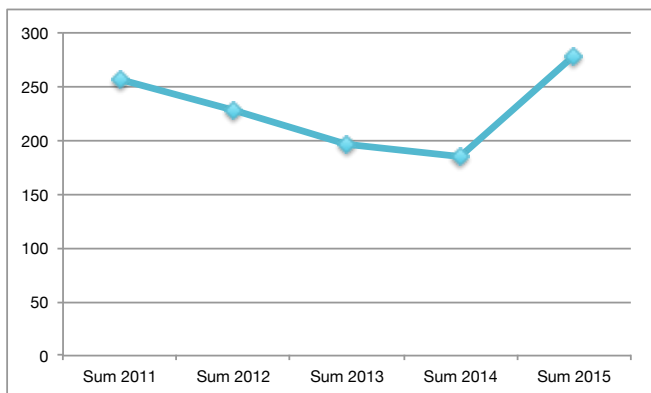


Report to BOARD OF REGENTS *Student Services*

Reporting Period
May 1-July 17, 2015

Summer 2015 Enrollment: New Students are at the highest level

For summer 2015, new students are at their highest level for the last five summer period. The college registered 278 new students during summer 2015 representing an increase of 93 (or 50.27%) new students over summer 2014.



As part of the college's recruitment and enrollment action plan, college fairs were launched at all campuses during March and April 2015, inviting high school seniors and other students who had been placed into the college's programs via the COMET, high school principals and counselors, and parents. Additionally, \$10 admission fee waivers were given to students who filed their application for either summer 2015 or fall 2015. The college also extended early register for summer 2015 to incoming new students, and offered summer 2015 classes (e.g., ESL and developmental math, ACE courses, and some 100-level writing and reading classes) with start-dates later in June to accommodate seniors whose graduation dates were after June 1, 2015.

The college registered a total headcount of 1,081 representing a slight increase (8%) in students over summer 2014. However, compared to summers 2011 and 2012, a decline in enrollment by 11% and 15%, respectively. The high enrollment in summer 2011 (2,109 headcounts) was affected by the year round Pell grant awards being available to fund summer session costs.

End-of-Summer 2015: 91% good academic standing

Of the 1,081 students who registered during summer 2015, 91% (or 1,001 headcounts) completed the session in good academic standing, while 7% (or 80 headcounts), not in good academic standing. The college defines good academic standing as having a cumulative grade point average of 2.0 or above.

In today's world, the standards of success have become a bit more complicated. You can't just drill; you need to create. You can't just learn; you need to innovate. You can't just follow; you need to lead.

~Lisa Macuja Elizalde

Acting VP EM/SS participated in the Title IX Compliance Institute

The college's acting VP for Enrollment Management and Student Services participated in the Title IX Compliance Institute hosted by the National Center for Student Life, July 9-12, 2015, in Las Vegas.

Title IX of the Education Amendments of 1972 prohibits discrimination based on sex in education programs and activities in federally funded schools at all levels. It protects students, employees, applicants for admissions and employment, and other persons from all forms of sex discrimination, including discrimination based on gender identity or failure to conform to stereotypical notions of masculinity or feminity. All students (as well as other

persons) at recipient institutions are protected by Title IX — regardless of their sex, sexual orientation, gender identity, part- or full-time status, disability, race, or national origin — in all aspects of a recipient's educational programs and activities.

U.S. congress enacted Title IX with two principal objectives in mind: (a) to avoid the use of federal resources to support discriminatory practices in education programs, and (b) to provide individual citizens effective protection against those practices. As such, all public and private elementary and secondary schools, school districts, colleges, and universities receiving any federal funds must comply with Title IX.

ANNAPISI Scholarship: College graduated 181 students last Spring 2015

On May 28, 2015, the college entered into a memorandum of understanding with the Asian and Pacific Islander American Scholarship Fund (APIASF) to provide financial support to eligible low-income Asian and Pacific Islander students (AAPI), and to document the impact of that grant aid (AANAPISI scholarship) on recipients' academic outcomes to the extent possible as compared to non-recipients. By AAPI, be of Asian and/or Pacific Islander ethnicity as defined by U.S. census.

The college graduated 181 students last spring 2015 semester. Additionally, nine students were graduated under the baccalaureate program in elementary education offered in partnership with the University of Guam.

Of the 181, 120 and 17 graduated from the National Campus and CTEC-Pohnpei, respectively. 15 from Chuuk Campus, 19 from Kosrae Campus, and 10 from Yap Campus.

The application for the AANAPISI scholarship opened last July 15, 2015. The deadline for applicants to apply for this scholarship will be on October 15, 2015, 6:00 PM, Pacific Time. The college has designated the acting VP for Enrollment Management and Student Services as the point-of-contact for the COM-FSM and APIASF MOU, AANAPISI Scholarship Program. As of report, 24 COM-FSM students had applied for the ANNAPISI scholarship. Of the 24 applicants, two had completed the application process.

Online submission of grades

The Office of Admissions, Records and Retention (OARR) pilot implemented during summer 2015 online submission of final grades by instructors via their myShark.

This is part of OARR's continued efforts to further improve services by embracing new technologies consequently job functions become less clerical in nature.

As part of the MOU with APIASF, the college will be recruiting 10 readers who will be reviewing APIASF/ANNAPISI scholarship applications from all of the 18 partner institutions.

College issued 240 academic transcripts

The scholarship offers between \$2,500 to \$5,000 to selected recipients, and one of the eligibility requirements provides that the recipient must be enrolled as a full-time student in a degree-seeking program at COM-FSM during the 2016 Spring Semester.

The college's Office of Admissions, Records and Retention (OARR) reported that it processed and issued 240 academic transcripts in support of students' applications for scholarship, employment, admissions to other higher education institutions, and others.

\$338,245.24 Pell grant awarded to 325 students during Summer 2015

The college's Financial Aid Office reported awarding \$338,254.24 Pell grant to 325 students during summer 2015. The 325 summer 2015 Pell recipients represented 30% of the college's 1,081 headcounts registered during summer 2015.

Campus	Enrollment	Pell Recipients	Recipients in % of Enrollment	Awards in US\$
National	388	114	29%	\$129,787.24
Pohnpei	319	102	32%	99,592.00
Chuuk	131	30	23%	27,900.00
Kosrae	167	50	30%	49,439.00
Yap	76	29	38%	31,527.00
Total	1,081	325	30%	\$338,245.24

FAO further reported that last spring 2015, \$4,565,378.00 Pell grant were awarded to 1,866 students representing 89% of the college's spring 2015 enrollment. Last fall 2014, 2,122 students (or 91% of the semester's enrollment) received Pell grant amounting to \$5,302,363.00.

164 students received \$124,847.00 financial assistance

Last spring 2015, FAO reported that 164 students received \$124,847.00 financial assistance from the FSM National, State, and CFMS subsidies.

Financial Assistance from	Recipient	Awards in US\$
FSM National Scholarship	39	\$26,570.00
Chuuk State Scholarship	23	11,825.00
Yap State Scholarship	37	39,500.00
Kosrae State Scholarship	19	9,500.00
CFMS Kosrae	22	20,217.20
CFMS Yap	24	17,234.80
Total	164	\$124,847.00

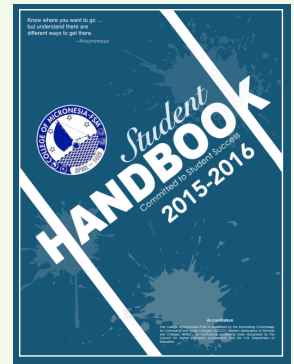
FAO further reported that last fall 2014, 131 students received \$106,580.20 financial assistance from the CFMS subsidies, national and state including non-government scholarships. As of June 30, 2015, 590 students participated in the SEG Work Study Program and were awarded \$108,608.75, and seven US VA students received \$6,937.50 under the US VA work study program.

Department of Student Services completed program review

All units under the college's department of student services have completed two cycles of their unit annual assessments, and program reviews as means of evaluating quality of student support programs and services crucial to informing improvement and resource allocation.

College prepares for the opening of Fall 2015 semester

The college prepares for the opening of fall 2015 semester. Orientation for incoming new and transfer students is scheduled August 3-7, 2015 with the general assembly on August 3, and registration for new students set on August 4 instead of August 7. Peer coaches have been organized to assist during the orientation week.



1,154 students early registered for Fall 2015 semester

The college extended early registration for fall 2015 semester last July 20-24, 2015. As a result, 1,154 students with 13,466.5 credits (or equivalent to 1,222 full-time equivalent students) early registered for fall 2015 classes. If compared to the college-wide fall 2015 revenue and tuition fee projections, the early registration enrollment figures represent 47% of the college's fall 2015 projections in terms of head counts, registered credits, and full-time equivalent students.

The college has scheduled the following registration dates.

- **August 4, 2015** for new and transfer students
- **August 11-13, 2015** regular registration for all students
- **August 17-19, 2015** for adding and dropping courses including late registration.

Tables 1 to 3 provide the distributions of the college's enrollment figures as of July 24, 2015 by campuses, and compared to the fall 2015 enrollment projections.

Special COMET for Fall 2015 admission

The college administered last June 2015, special COMET to high school seniors who were non-admit under the spring 2015 COMET including other students who were not able to take the February to March 2015. There were 134 students who took the special COMET, and of the 134 students 60 (or 45%) were placed into the college's programs; while 55%, non-admit. Additionally, COMET was also administered to 49 high school seniors in Woleai, Yap. 26 (or 53%) passed into the degree, ACE, and certificate levels, while 24 (or 47%), non-admit.

Campus	Fall 2015 Revenue and Tuition Fee Projection		
	Headcounts	Credits	FTE
National	1,018	12,480	1,040.00
CTEC-Pohnpei	669	7,158	596.50
Chuuk	349	4,083	340.25
Kosrae	243	2,576	214.67
Yap	195	2,145	178.75
Total	2,474	28,442	2,370

Table 1. Fall 2015 Projections

Campus	Early Registration Enrollment		
	Headcounts	Credits	FTE
National	623	7,729	644
CTEC-Pohnpei	327	3,574.5	298
Chuuk	83	942	79
Kosrae	52	523	44
Yap	69	698	58
Total	1,154	13,466.5	1,122

Table 2. Early Registration Figures

Campus	Early Registration Enrollment in Percent of Projection		
	Headcounts	Credits	FTE
National	61%	62%	62%
CTEC-Pohnpei	49%	50%	50%
Chuuk	24%	23%	23%
Kosrae	21%	20%	20%
Yap	35%	33%	33%
Total	47%	47%	47%

Table 3. Early Registration Figures in percent of fall 2015 projections

US Embassy Chief of Mission seek two student nominees

The Chief of Mission at the US Embassy in Kolonia requested from the college two student nominees to a conference that will be held in Auckland, New Zealand, September 2-6, 2015.

Concordia res parvae crescent
(Work together to accomplish more)

